

| MOVIE | THU 7 | FRI 8 | SAT 9 | SUN 10 | MON 11 | TUE 12 | WED 13 |
|---|-----------------------------|-----------------------------|-----------------------------|-----------------------------|-----------------------------|-----------------------------|------------------------------|
| GLADIATOR II (M) 148 mins • Advance Screenings | | | | | | | 7.00pm |
| UNBREAKABLE: THE JELENA DOKIC STORY (M) 105 mins [CC] AD • Limited Season | 2.30pm | 2.30pm | 2.30pm | 4.10pm | 12.00pm | 2.30pm | 12.15pm |
| THE GREAT WHITE WHALE (PG) 104 mins • Encore Screening | | | | 3.30pm | | | |
| TOUCH (M) 121 mins [CC] AD Partially Subtitled • Limited Season | 10.00am | 12.00pm | 12.00pm | 3.15pm | 2.15pm | 12.00pm | 2.30pm |
| THE POOL (M) 95 mins • Limited Season | 12.30pm | 10.00am | 4.45pm | 1.20pm | 10.00am | 10.00am | 5.00pm |
| MOZART'S SISTER (G) 106 mins • Last Days | | | | 10.40am | | 6.30pm | |
| HERE (M) 104 mins [CC] AD | 12.10pm 4.50pm 7.15pm | 12.10pm 4.50pm 7.15pm | 12.10pm 4.50pm 7.15pm | 1.00pm 6.30pm | 12.10pm 4.50pm 7.15pm | 12.10pm 4.50pm 7.15pm | 10.00am 12.10pm 4.50pm |
| LEE (M) 117 mins Movie Review Club Selection for November | 9.45am 2.25pm 7.15pm | 9.45am 2.25pm 7.15pm | 9.45am 2.25pm 7.15pm | 11.00am 1.35pm 6.00pm | 9.45am 2.25pm 7.15pm | 9.45am 2.25pm 7.15pm | 9.45am 2.25pm 7.15pm |
| A DIFFERENT MAN (MA15+) 112 mins [CC] AD • Last Days | 4.45pm | 4.45pm | | 6.00pm | 4.45pm | 4.45pm | |
| MEMOIR OF A SNAIL (M) 94 mins [CC] AD • Last Days | | | | | | 11.30am | |
| TREASURE (M) 111 mins [CC] AD • Last Days | | | | 11.00am | | 4.00pm | |
| THE CRITIC (M) 98 mins • Last Days | | | 9.45am | | | 1.45pm | |

FULLY LICENSED – BAR SERVICE AVAILABLE

All cinemas are equipped with IR (Infrared hearing). Session time information is also available through the Movie Hotline on 5588 4008. For further details on individual films please visit www.hota.com.au.

Please note: Tickets can be purchased from the Box Office or avoid the queue and book online with no additional surcharge. HOTA reserves the right to alter without notice the scheduled movies & screening times.

[CC] - Closed caption subtitles | AD (Audio Description) - audio describes some visual elements. Limited number of devices.

NFT - No Free Tickets

MOVIE REVIEW CLUB

On the fourth Wednesday of each month (Feb-Nov), HOTA Cinema hosts a Movie Review Club. Meet like-minded people and discuss the selected film with a forum of academics. Simply see the film ahead of time and join us on the day for an interactive discussion. It's FREE to join the club!

The next meeting will be held on Wednesday 27 November 2024 at 10.30am til noon, the film to be reviewed: *LEE (M)*

TICKET PRICES

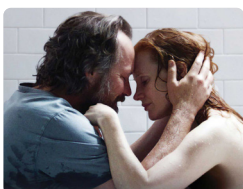
Adults \$15.50
HOTA Member* \$10.00
Students* \$12.00
Child (3-15 yrs) \$12.00
Senior/Aged Pensioner* \$12.00

DISCOUNT MONDAYS AND TUESDAYS!

ADULTS \$11.00
CONC*/STUDENT*/CHILD \$9.50
HOTA MEMBER* \$9.00

*Please show appropriate card to receive discount

COMING SOON



MEMORY (MA15+) - Strong mental health themes and references to sexual violence. (104 mins)

(Drama) Starring: Jessica Chastain, Josh Charles, Peter Sarsgaard, Elsie Fisher.

Sylvia, a single mother, confronts her traumatic past after a chance encounter with Saul, a former schoolmate who stalks her after their high school reunion. As their relationship evolves, both are forced to face buried memories and personal hardships.

OPENS 14 NOV



GLADIATOR II (M) - *Animal cruelty, blood and gore, injury detail, and violence.* (148 mins) (Action, Adventure) Starring: Pedro Pascal, Denzel Washington, Paul Mescal, Connie Nielsen. From legendary director Ridley Scott, *Gladiator II* continues the epic saga of power, intrigue, and vengeance set in Ancient Rome. Years after witnessing the death of the revered hero Maximus at the hands of his uncle, Lucius (Paul Mescal) is forced to enter the Colosseum after his home is conquered by the tyrannical Emperors who now lead Rome with an iron fist.



UNBREAKABLE: THE JELENA DOKIC STORY (M) - *Themes of abuse and coarse language* (105 mins) (Documentary) Starring: Jelena Dokic. The incredible true story of how Jelena Dokic became a tennis star while surviving war, bullying and extreme domestic violence at the hands of Damir Dokic, the tennis father from hell. It's the story of falling down from a great height, as the world looked away, and finally finding your feet again.



THE GREAT WHITE WHALE (PG) - *Mild themes* (104 mins) (Documentary). This is the extraordinary tale of those first attempts to climb Big Ben, the smoking glacier ringed volcano on Heard Island, Australia's loneliest, most remote outpost, told by those who were there. The beautifully shot original footage of the expedition, the brilliant music score, the quirky humour of the expeditioners, the utter boldness of the quest, adds spice to one of the least known yet most audacious adventure tales of the 20th century.



TOUCH (M) - *Mature themes and sex scenes.* (121 mins) (Documentary) (Partially Subtitled) Starring: Masahiro Motoki, Ruth Sheen, Benedikt Erlingsson. After receiving an early-stage dementia diagnosis at the outset of the COVID-19 pandemic, widower Kristofer leaves behind his Reykjavik home hoping to solve the greatest mystery of his life. As a student in London five decades earlier, Kristofer had fallen in love with Miko, whose father owned the Japanese restaurant where they both worked. But at the height of their whirlwind affair, Miko abruptly vanished.



THE POOL (M) - *Coarse language* (95 mins) (Documentary). Bondi Icebergs is the most photographed pool in the world. For nearly a century this spectacular 50 metre stretch of sparkling blue at the southern end of Bondi Beach has occupied a special corner in the hearts of millions. A stunning cinematic experience with a soundtrack harking back to the 1960s. The film speaks to the enduring power of community and our collective longing to find it. At Bondi Icebergs, no matter your background, everyone is equal in their swimsuits. **Q&A with Director Ian Darling Wed 6th Nov only.**

MOZART'S SISTER (G) - *Very mild themes* (106 mins) (Documentary)

A child prodigy forgotten to time, as seen through the eyes of musicians, musicologists. For the first 16 years of her life, Mozart's sister shared equal billing with her brother. Musical partners and collaborators, Wolfgang Mozart and Maria-Anna Mozart played together before Kings and Queens and were the talk of Europe.

HERE (M) - *Coarse language* (104 mins) (Drama)

Starring: Tom Hanks, Robin Wright, Paul Bettany, Michelle Dockery, Kelly Reilly

From the reunited director, writer, and stars of *Forrest Gump* (1994), *Here* is an original film about multiple families and a special place they inhabit. The story travels through generations, capturing the human experience in its purest form.

LEE (M) - *Mature themes, violence, sexual violence, coarse language and nudity* (117 mins) (Drama, Biography)

Starring: Kate Winslet, Andy Samberg, Alexander Skarsgård, Marion Cotillard, Josh O'Connor.

Oscar winner Kate Winslet stars in this fascinating portrait of the great American war correspondent Lee Miller, whose singular talent and ferocious tenacity gave us some of the 20th century's most indelible images.

A DIFFERENT MAN (MA15+) - *Strong themes, suicide scenes, violence, coarse language, nudity and sex scenes* (112 mins)

(Comedy, Thriller) Aspiring actor Edward undergoes a radical medical procedure to drastically transform his appearance. But his new dream face quickly turns into a nightmare, as he loses out on the role he was born to play and becomes obsessed with reclaiming what was lost. Boasting stellar performances by Sebastian Stan, Renate Reinsve, and Adam Pearson.

MEMOIR OF A SNAIL (M) - *Mature themes, coarse language, and sexual references* (94 mins) (Adult Animation)

Starring: Sarah Snook, Jacki Weaver, Eric Bana, Magda Szubanski. A bittersweet memoir of a melancholic woman called Grace Pudel - a hoarder of snails, romance novels, and guinea-pigs.

TREASURE (M) - *Mature themes and coarse language* (111 mins) (Comedy, Drama) Starring: Lena Dunham, Stephen Fry.

TREASURE follows Ruth (Dunham), an American music journalist, and her father, Edek (Fry), a charmingly stubborn Holocaust survivor, on a journey to his homeland. While Ruth is eager to make sense of her family's past, Edek embarks on the trip with his own agenda.

THE CRITIC (M) - *Mature themes, sexual references and coarse language* (98 mins) (Drama)

Starring: Ian McKellen, Gemma Arterton, Mark Strong. In 1930s London, a powerful theatre critic, threatened by the new owner of the newspaper where he works, enlists a young actress to help him prevent his boss from firing him.

G - General, PG - Parental Guidance Recommended, M - Recommended for Mature Audiences, MA15+ - Not suitable for people under 15. Under 15s must be accompanied by a parent or adult guardian, R18+ - Restricted to 18 and over, CTC - Check the Classification, E - Exempt from Classification