

HOTA HOME
OF THE
ARTS



Visiting HOTA Gallery

GOLDCOAST.

HOTA.COM.AU

Source: Mander Up



CONTENTS

- 3 [When can you visit](#)
- 3 [Things to do at HOTA Gallery](#)
- 4 [Arriving at HOTA Gallery](#)
- 5 [Entering HOTA Gallery](#)
- 6 [Getting around](#)
- 7 [What's on each floor](#)
- 8 [Food and drinks](#)
- 8 [Where are the toilets](#)
- 9 [Things that happen in HOTA Gallery](#)
- 9 [What are the rules](#)
- 9 [People you might see](#)
- 10 [What else can you do at HOTA](#)
- 11 [Where is HOTA Gallery](#)
- 11 [How to get here](#)
- 11 [How to contact us](#)



WHEN CAN YOU VISIT

HOTA Gallery is open every day, apart from Christmas day, when we are closed.

The Gallery is open daily:
10am-4pm

HOTA Gallery is free to visit but you must **pre-book a ticket**. Some exhibitions may have a cost. You can choose what time you would like to visit when you book your ticket.

You can book tickets online [here](#).

You can read more about HOTA on our website [here](#).

QUIET HOUR

The first Saturday of every month between 9-10am is Quiet Hour in HOTA Gallery.

Quiet Hour is a relaxed and calm environment, suitable for anyone who prefers a quieter visitor experience.

THINGS TO DO AT HOTA GALLERY

- See the **major exhibition** in the main Gallery
- Look at artworks from the **City Collection in Gallery 2-4**
- See the exhibition in the **Children's Gallery**
- Peek into the art collection storage area
- Visit the HOTA Shop
- Eat at the restaurant or bar
- See the view from the top floor
- Look at the art outdoors near the entrances.



ARRIVING AT HOTA GALLERY



The carpark can be busy allow extra time if you are travelling by car. You can park in front of HOTA Central and walk across to the Gallery. You can also park in the HOTA Gallery car park.



Car park at HOTA Central



HOTA Gallery Car park

ENTERING HOTA GALLERY

There are two main access doors to the Gallery:

- Ground level
- Lower Ground

GROUND LEVEL

There are revolving doors.

These doors will automatically open. You will enter into the Gallery foyer, near the HOTA Shop and Information desk.

You need to wave your hand in front of the sensor to open this door.

There are side entrances beside the revolving door. These doors provide wheelchair access to the Gallery.



Accessible entrance at ground level



Wheelchair accessible entrance

LOWER GROUND

Look for the colourful sculpture and the revolving door.

The door will automatically open. You can then walk up the stairs or use the lift to get to the Gallery foyer.

There are side entrances beside the revolving door provide wheelchair access to the Gallery.

You need to wave your hand in front of the sensor to open this door.



Colourful sculpture

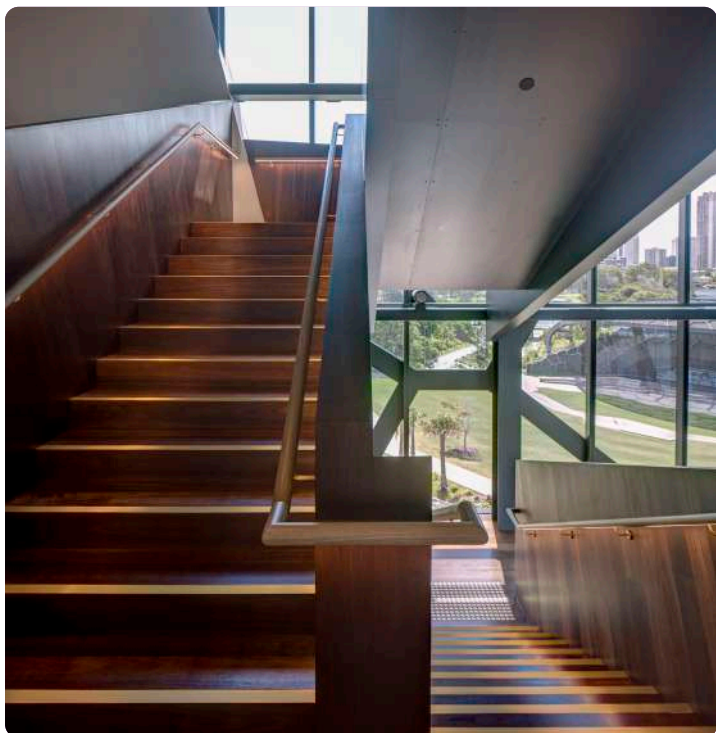


Stairs to Gallery foyer



Accessible entrance at lower ground

GETTING AROUND THE GALLERY



You can use the stairs



You can use the lifts

WHAT'S ON EACH FLOOR

HOTA Gallery has six floors.

LOWER GROUND LEVEL

- Entrance to the Gallery
- Access to the lift
- Changing Places facilities
- Accessible Toilets
- Lockers
- School bag storage

GROUND LEVEL:

- Entrance to the Gallery
- Information Desk – you can ask for help or information here
- Main Exhibition Gallery 1
- Children's Gallery
- The Studio - in here artists run workshops and art making activities
- Outdoor Terrace
- A special viewing window to the art storage area
- HOTA Shop - you can buy souvenirs here
- Palette Restaurant
- Lifts and stairs to all levels

LEVEL 1

- Administration offices – for staff only

LEVEL 2

- Gallery 2
- Use the stairs or lift to get to this Gallery
- See artworks from the City Collection here

LEVEL 3

- Gallery 3
- Use the stairs or lift to get to these Galleries
- See artworks from the City Collection
- Accessible Toilets

LEVEL 4

- Gallery 4
- Use the stairs or lift to get to these Galleries
- See artworks from the City Collection

LEVEL 5

- Use the stairs or lift to get to level 5
- Rooftop Bar - The Exhibitionist Bar
- Viewing platform - see great views of the Gold Coast skyline

CHILDREN'S GALLERY

Our Children's Gallery on the ground floor is for families.

You can make and see art here.

The Children's Gallery contains materials you can touch.



FOOD AND DRINKS

RESTAURANT

The Restaurant at HOTA Gallery is called Palette. It's on the ground floor.

Order your food and drinks at the counter.

The person behind the counter will help you make your order.

You can sit inside or outside. The Restaurant can be crowded and noisy.



Palette Restaurant

ROOFTOP BAR

The rooftop bar at HOTA Gallery is called The Exhibitionist Bar. It is on level 5.

Order your food and drinks at the counter.

The person behind the counter will help you make your order.

You can sit inside or outside. The bar might be crowded and noisy.

HOTA CAFÉ

HOTA Café is across at HOTA Central.

The menu has snacks, light lunches, coffee, drinks and cakes. You can look at the menu [here](#).

Order your food and drinks at the counter.

You can sit inside or outside on the deck.

The café might be busy.



HOTA Café Ordering Counter

TOILETS

Accessible toilets are located on the lower ground floor, level three, and level five of HOTA Gallery.

The lower ground floor has a Changing Places accessible toilet and adult change facility.

Toilets have hand dryers which you may find noisy.

There are baby change facilities on the lower ground floor.



Accessible Toilet and Adult Change Facility

THINGS THAT HAPPEN IN HOTA GALLERY

- There may be large crowds visiting the Gallery
- School groups might be visiting
- You might see visitor talks or tours Some areas might be busy and noisy. Ask staff If you would like to be shown to a quieter area.

PEOPLE YOU MIGHT SEE

You might see our Visitor Services Officer's and HOTA Ambassador's at HOTA Gallery.

You can ask these people for help.

They can also tell you more about the artworks.

You might also see a Protective Services Officer, they help keep the Gallery safe.

WHAT ARE THE RULES AT HOTA GALLERY?

- You must not touch the artworks unless there is a sign that says it is ok to do so
- You are not allowed to eat or drink in the Gallery
- You can take photos but don't use a flash



HOTA Gallery staff



Protective Services Officer

WHAT ELSE CAN YOU DO AT HOTA?



You can look at outdoor art and sculptures in the Parklands.



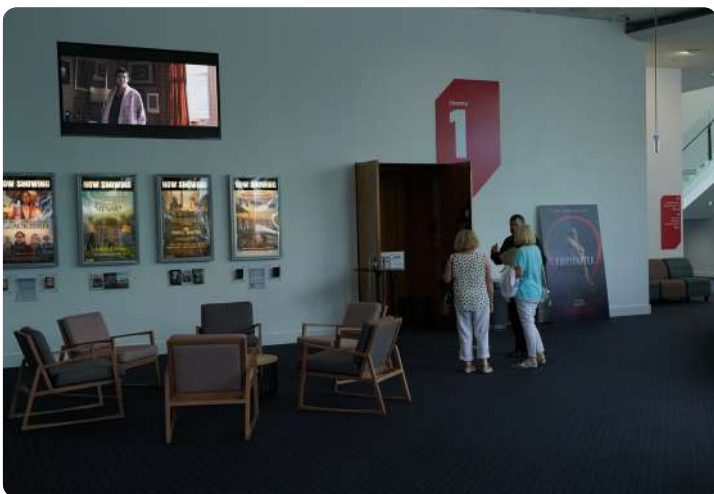
You can swim in the lake.



You can buy tickets from the Box Office at HOTA Central or online. You can find out what's on [here](#).



You can visit the HOTA Café at HOTA Central for drinks and snacks. You can see the menu [here](#).



You could see a movie at HOTA Cinema. You can find out what's on [here](#).



There is an adventure trail you can climb.

WHERE IS HOTA GALLERY

HOTA Gallery is found at HOTA, Home of the Arts which is an arts venue in parklands.

Our address is 135 Bundall Road. Surfers Paradise Queensland 4217.

HOW TO GET HERE

BY CAR:

There are car parks at HOTA and accessible car parks and set-down areas in front of HOTA Central and HOTA Gallery (see images below).

The closest car park to HOTA Gallery is accessed from Ouyan Street.

FROM SURFERS PARADISE:

You can access HOTA using the bridge from Chevron Island.

CONTACT US

Telephone: 07 5588 4000

Email: hello@hota.com.au

We want everyone to have a great time when they come to HOTA. And we are committed to making sure the arts are accessible for everyone

Visit our website to find out more information:

hota.com.au



Entrance from Bundall Road



Look for these signs



Accessible parking at HOTA Central



Accessible parking at HOTA Gallery